

Packaging Spools - Enamelled Aluminium Round Wires

JWPL Enamelled Aluminium Round Wires are supplied on Cylindrical Barrelled Plastic Spools, and Taper Barrelled Plastic Spools.

Wire Size & Respective Spool Types:

Size Range (mm)	Cylindrical Barrelled Plastic Spools (Refer Figure A)	Tapered Barrelled Plastic Spools (Refer Figure B)
5.000 to 1.600	355 mm 310 mm 250 mm	PT-60 PT-25
1.500 to 0.500	310 mm 250 mm 200 mm	PT-60 PT-25 PT-15
0.450 to 0.175	250 mm 200 mm	PT-25 PT-15 PT-10

Other spools are available on request.

FIGURE A : DIMENSIONS OF CYLINDRICAL BARRELLED PLASTIC SPOOLS

Spool Type	Dimensions (mm)					Weight (gms)	Volume (cm ³)
	Flange Dia.	Barrel dia.	Bore dia.	Traverse length	Overall length		
	d ₁	d ₂	d ₃	L ₂	L ₁		
200	200	106	38	120	150	450	2712
250	250	110	38	122	150	720	4831
310	310	200	36	160	200	1267	7053
355	355	224	36	160	200	1450	9535

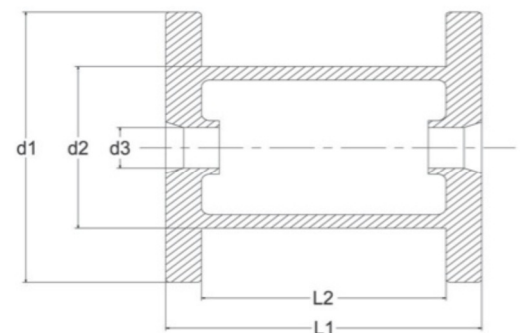


FIGURE B : DIMENSIONS OF TAPERED BARRELLED PLASTIC SPOOLS

Spool Type	Dimensions (mm)							Weight (gms)
	Flange Dia.		Barrel dia.		Bore dia.	Traverse length	Overall length	
	d ₁	d ₃	d ₂	d ₄	d ₅	L ₂	L ₁	
PT-10	180	160	110	95	30	200	227	520
PT-15	200	180	108	95	30	200	227	550
PT-25	225	210	128	108	32	248	278	950
PT-60	300	170	180	150	45	350	400	2350

